



Leaching Galley

CONCRETE PRODUCTS

356 Tuckie Road
N. Windham, CT 06256

(860) 423-4144

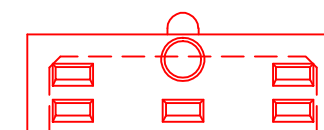
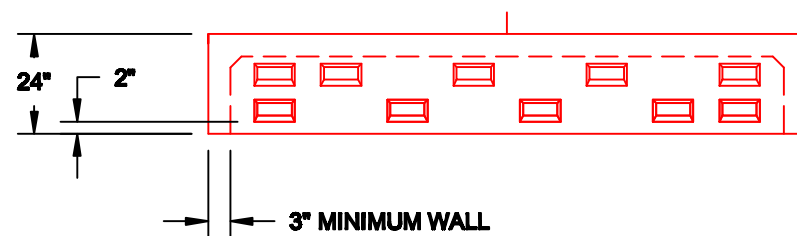
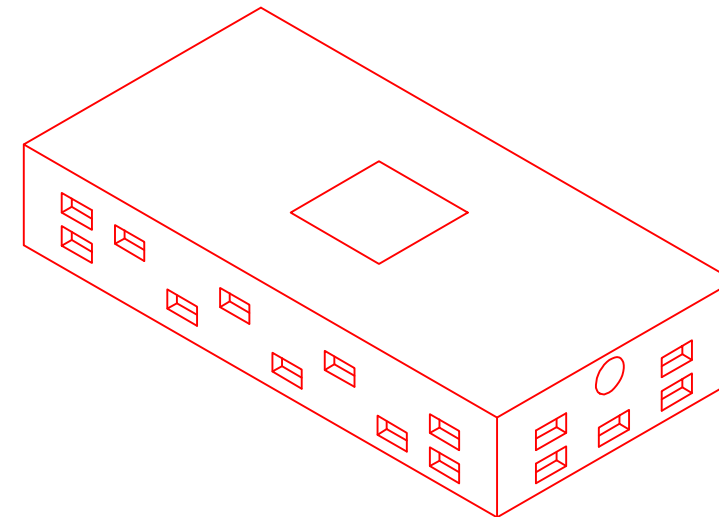
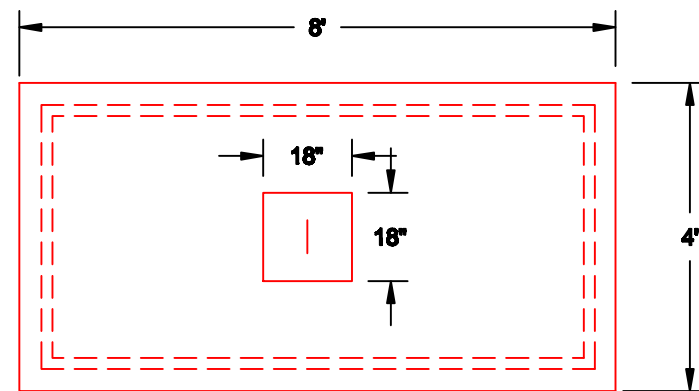
FAX (860) 456-1377

PRODUCT CODE

CPLG
4x8x2

DESIGN NOTES:

- Concrete is 5000 psi at 28 days.
- Available design loading AASHTO H20-44.



Pre-cast Bulkheads, Steps, and Septic Tanks